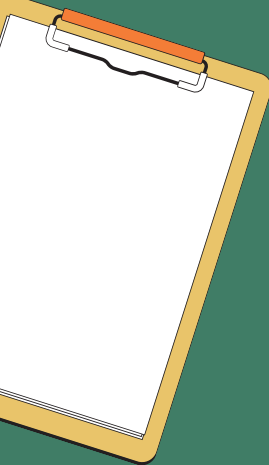


**Signs and
Symptoms of
Orofacial
Myofunctional
Disorders (OMDs)
in 0-4 years of age**





<p>Feeding and Swallowing</p>	<ul style="list-style-type: none">• Excessive swallowing of air when feeding• No rooting reflex or rotary chew• Difficulties with swallowing, poor chewing, messy eating, audible eating• Tongue thrust• Difficulty nursing• Difficulty transitioning from breast/bottle to straw/cup.• Difficulty transitioning to puree and solid foods• Failure to thrive• Gagging/vomiting before or after meals• Picky eating habits or food aversions• Prolonged sucking habits• Tongue protrusion past the lower lip during feeding• Poor latch during breast feeding or bottle feeding
<p>Oral Habits</p>	<ul style="list-style-type: none">• (Bruxism) teeth grinding• Daytime breathing patterns including open mouth posture and audible breathing• Mouthing of objects• Nail biting• Open mouth posture at rest• Prolonged thumb-sucking• Tongue protrusion past the lower lip at rest• Tongue suckling/sucking
<p>Structural and Medical</p>	<ul style="list-style-type: none">• Airway obstruction including sinus congestion• Crowded teeth• Dental malocclusion• Deviated septum• Extra spacing or crowding between teeth• Dry lips/lip blisters• High-arch palate• Restless sleep• Poor lingual range of motion• Poor oral hygiene• Sleep apnea

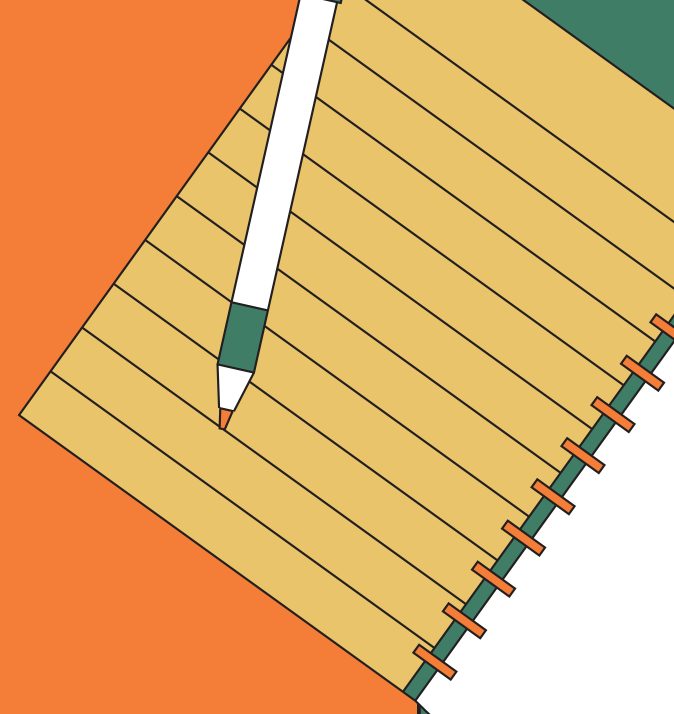




Structural and Medical

- Tongue scalloping
- Torticollis
- Torus palatinus
- Upper Airway Resistance Syndrome (UARS)

Speech

- Atypical speech and abnormal lingual-dental placement for: /t, d, n, l/ due to low forward tongue position, tongue-tie, and/or atypical swallow
 - Challenges with palatal sounds which require back-tongue side spread including: /ch, j, sh, dz, r/ (secondary to tongue-tie, high-arch palate, and/or low tongue tone)
 - Distorted position of /s,z/ often with interdental or lateral lisp correlated with a tongue thrust swallowing pattern and/or tongue tie.
 - Fronted velar phonemes /k,g/ due to tongue-tie, low-forward tongue carriage, and/or weakness with lingual retraction.
 - Hyper or hyponasal speech
 - Lateralized air emission on: /ch, j, dz, sh, s/
 - Poor overall speaking intelligibility
 - Weakness for bilabials and labiodentals due to inadequate lip closure, open mouth posture, lip tie, and/or labial insufficiency.
- 

source: @myofunctionaltherapy.uk

Holistic Speech Therapy, Inc.
935 Indiana Ave.
Venice, CA 90291
(323)400-5209

